



# *Nitanium<sup>®</sup> Palatal Expander<sup>2™</sup>*

Multi-Purpose Finishing Appliance





# The easy-to-use *Nitanium Palatal Expander<sup>2</sup>* Appliance takes expansion a step beyond.



This extraordinary expansion appliance has the capacity to Rotate, Upright, Distalize, and Expand in the anterior and posterior arch with gentle, biocompatible force. A continuous pre-programmed light-force appliance that corrects the molar rotations while expanding the arch at the same time, it provides a simultaneous skeletal and dento-alveolar expansion.

The *Nitanium Palatal Expander<sup>2</sup>* Appliance's action is the result of transition temperature and shape memory. Warmth within the patient's mouth activates movement in the thermal nickel titanium energy wire toward the appliance's pre-programmed shape. This produces the desired expansion in unison with tooth movement. Once the exact correction is achieved, the appliance stops expanding and lies passive. A light, slow, continuous force system has been shown to be associated with a more physiological adjustment, neuromuscular stability, and less relapse potential. In addition, repair keeps up with expansion. *Expansion is usually completed in 2 to 4 months and retention is usually 2 to 3 months.*



## Key Features

- **Slower expansion**, which allows the suture to reposition and regenerate, has been shown to lower incidents of relapse\*
- **Addresses** the sagittal, lateral, and vertical relationships
- **Thermally-activated Nitanium** for total control eliminating patient compliance, and creating better patient acceptance
- **May be used** with mixed and early dentition
- **Ease of placement** and removal by the doctor
- **Orthology arms and loops** provide adjustability for fine-tuning and finishing
- **No laboratory work is required** – available in 10 sizes

## Indication

- Molar, premolar, and cuspid expander
- Molar rotator
- Molar distalization
- Constrictor
- Anti-thumb
- Molar intruder
- Retainer
- Anchorage
- Control the vertical growth of the molars
- Control the vertical dimension
- Molar constriction
- Bite-opening

## Nitanium Palatal Expander<sup>2</sup> Appliance Case Study 1

Efficient Molar Rotation (3.5 Month Progress)

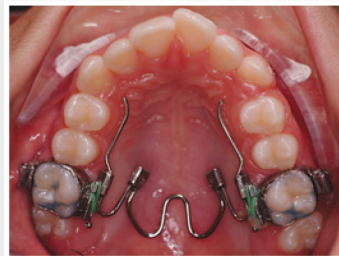


Automatic Midline Correction (4 Month Progress)



## Nitanium Palatal Expander<sup>2</sup> Appliance Case Study 2

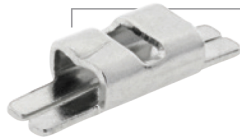
5 Month Progress: (February - June)



# Auxiliary Products

The *Nitanium Palatal Expander*<sup>2</sup> Appliance easily slips into any of the following weldable lingual sheaths.

Individual band kits are available with a welded lingual sheath and buccal tube.



## 971-032

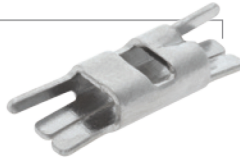
.036 slotted, horizontal, latching indent. Fits left or right. (10 per pack)



## UR/LL • 971-036

## UL/LR • 971-037

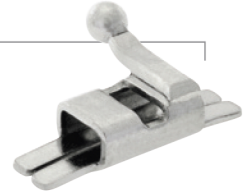
.036 horizontal hook, slotted, latching indent. (10 per pack)



## UR/LL • 971-034

## UL/LR • 971-035

.036 slotted, horizontal, latching indent hook. (10 per pack)



## UR/LL • 971-038

## UL/LR • 971-039

.036 vertical hooks. (10 per pack)

## Ordering Information

INDIVIDUAL EXPANDERS **, *** (1 PER PACK)	
SIZING	PART NUMBER
26 mm Expander	101-761
28 mm Expander	101-762
30 mm Expander	101-763
32 mm Expander	101-764
34 mm Expander	101-765
36 mm Expander	101-766
38 mm Expander	101-767
40 mm Expander	101-768
42 mm Expander	101-769
44 mm Expander	101-770

## Full Range Kit • 101-760

- 1 expander of each of the following 10 sizes: 26 mm, 28 mm, 30 mm, 32 mm, 34 mm, 36 mm, 38 mm, 40 mm, 42 mm, and 44 mm
- 1 can of Ortho Freez (10 oz)\*
- 1 acrylic storage holder
- Instruction manual

## Mid-Range Kit • 101-760M

- 1 expander of each of the following 5 sizes: 32 mm, 34 mm, 36 mm, 38 mm, and 40 mm
- 1 can of Ortho Freez (10 oz)\*
- 1 acrylic storage holder
- Instruction manual

## Individual Components

- Ortho Freez (10 oz can)\* • 100-788
- Expander Adjustment Plier • 200-450



\* Ground shipment recommended – This product is classified as hazardous material as per the U.S. Department of Transportation Pipeline and Hazardous Materials Safety Administration. Extra shipping charges may apply.

\*\* For easy identification, each expander has size numbers permanently stamped on the assembly.

\*\*\* Expanders are for single-use only.



P: 1300 ORDERZ (673 379)

E: sales@naol.com.au